



N Project Management NEWSLETTER

Issue
01

THIS MONTHS PROJECT UPDATE

Welcome to the first issue of the Project Management Monthly Newsletter, a new and exciting monthly addition to the Shire of Pingelly News, focused solely on the PRACC Project and delivering the community up to date information on the Project.

The New Year of 2017 began and January saw the project begin to enter a new and exciting phase. The Shire Works Crew were kept busy assisting in the process of preparing the site for demolition. They removed the bollards from along the Community Centre, and lifted the grass from the outer edging of the oval runoff area to the building site also installing a soil bund to redirect the stormwater.



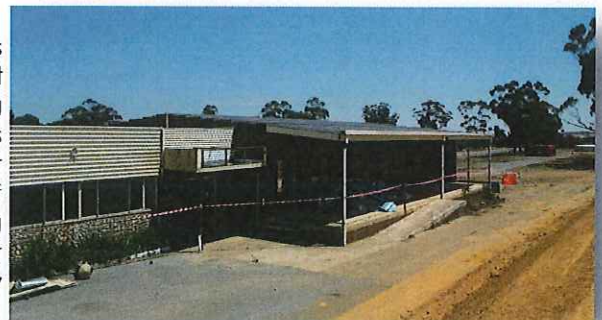
The demolition site of the Community Centre & Pavilion has had installation of on-site cameras, providing video surveillance in the form of time lapse capture of onsite images which can be accessed 24/7, giving us eyes in the sky on the PRACC Project throughout its demolition and construction process.



Tianco Transport did a great job delivering the works crew fill for the PRACC site, this has been compacted to specification and once demolition is completed this process of fill delivery and compaction will occur on the cleared site, in preparation for construction of the PRACC. Also a big thankyou to Tianco Transport for their in kind contribution to the PRACC.

On Monday 23 January a site meeting between the Shire, Shire President, Tenderers, Architects from Iredale Pedersen Hook and Engineers from TimberBuilt took place. The day was an information filled session and the Project Manager felt the day had been a great success and the purpose of the site meeting had definitely fulfilled its requirements. This meeting also paved the way forward for the delivery of Tender documents to the builder to price and provide a submission.

On the 25 January a phone call was received and it was announced that demolition would begin the following day on the 26 January 2017. It was agreed that Australia Day was great day to enter this exciting phase of demolition. Demolition is proceeding as programed and it is expected that it will be completed early February 2017.



IMPORTANT DATES

Thursday 26 January 2017

Demolition of the Community Centre and Pavilion began.

Friday 17 February 2017

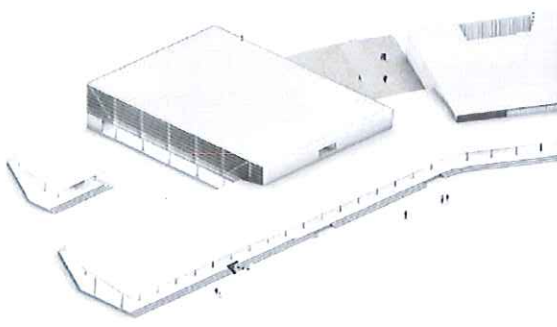
Closing Date for Tender Submissions.

Shire of Pingelly



17 Queen Street, Pingelly WA 6308 Phone: 9887 1066 Facsimile: 9887 1453

Email: pao@pingelly.wa.gov.au Website: www.pingelly.wa.gov.au



N Project Management NEWSLETTER

FEBRUARY'S OBJECTIVES

The PRACC Project is expected to see some major progression for the month of February. It is expected that demolition of the Community Centre and Pavilion will be completed and the town will say goodbye to a building that has held many memories for most. But with the end of every era, a new beginning is bought to life and that for the community of Pingelly is the PRACC.

The Tender for Construction will be issued this month after the process of demolition is completed. We are expecting to see quite a number of applicants vying for the job of putting together the PRACC. Given the scope of the PRACC Project, it will have the capacity to bring the successful Tenderer a host of recognition for their part in helping the Shire of Pingelly to bring it all together.

Cartage and delivery of fill via Tianco Transport will take place at the demolition site once demolition has been completed, this will then be compacted by the works crew ready for the construction.



Currently on display at the administration counter are samples of the engineered timber joint samples for viewing. These samples are constructed of layered Radiata Pine, with phenolic resin which is very similar to Bakelite in between each layer. The marriage of these two components results in a very strong and durable product. The phenolic resin which is a manmade version of pyrethins which comes from chrysanthemum flowers, also has injected into it's layers, bifenthrin additive which repels termites and other wood destroying insects, this is all in accordance with AS 1604. and ensures the building will remain termite free.

The joints that are on display are the dovetail mortise and tenon and a straight mortise and tenon. The dovetail mortise and tenon is designed for stability and is superior in joinery strength making it the perfect choice for the joints between the bearers and joists in the PRACC. The dovetail is a trapezoidal angled shape that interlocks with another angled shape as per the one on display, creating a snug fit that will allow the Raditia Pine even greater power to perform in strength and its load capacity.

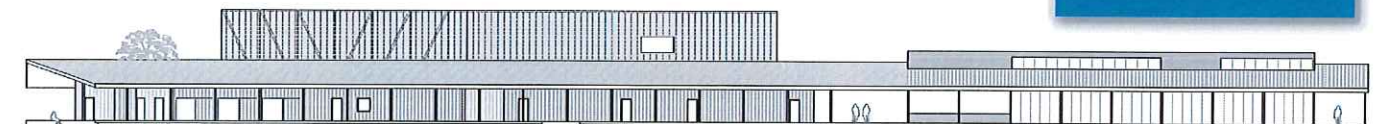


The straight mortise and tenon is an extremely old construction technique that produces joint systems that are extremely strong. This particular joint system does not require the assistance of artificial mechanisms to stand against natural occurrences and extremities and will maintain structural integrity in the face of such events making it the perfect choice to connect the purlins to the rafters in the PRACC.




Join our mailing list and receive our monthly e-newsletter delivered to your inbox and keep up to date with what is taking place with the PRACC Project.

Contact Kristel Steel on (08) 9887 1066 or email pao@pingelly.wa.gov.au



NORTH ELEVATION